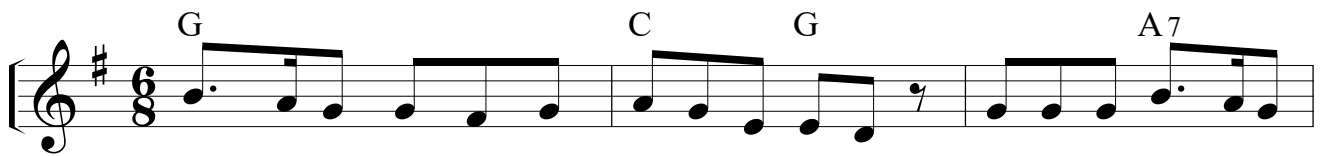


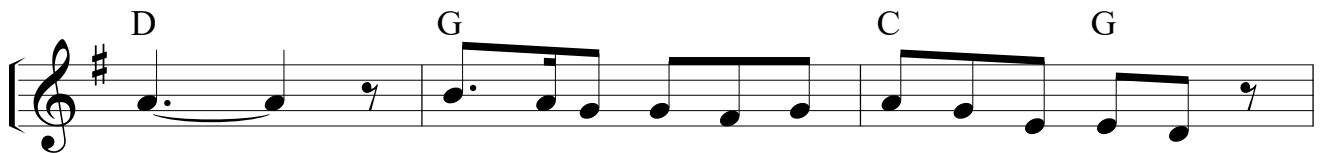
EVANGELHO — O CHAMADO DO SENHOR

11.7.11.7 com coro

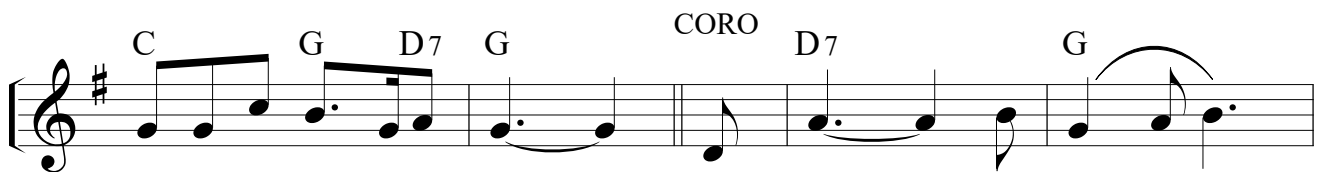
1027



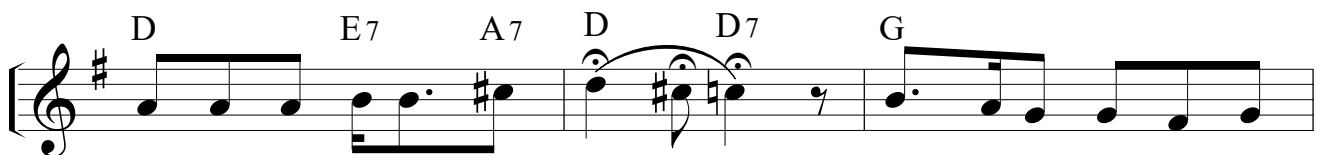
1. Cris - to nos cha - ma com to - da ter - nu - ra, Cha - ma a ti e a



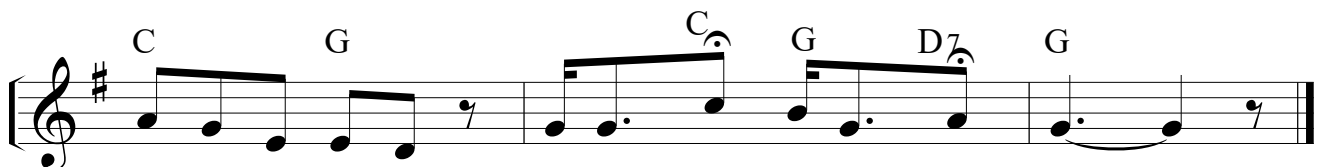
mim; E - le é tão pa - ci - en - te, a - guar - da



Pra ver a ti e a mim. Sim, vem ao lar!



Vem ho - je mes - mo ao lar! Cris - to te cha - ma com



to - da ter - nu - ra; Pe - ca - dor, vem ao teu lar!